

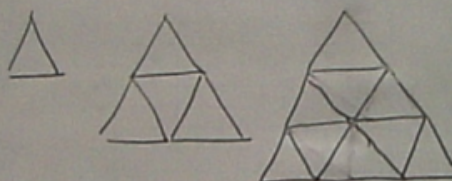
Neighbours are both making a patio out of stone. Paul is using 80 $10'' \times 12''$ stones and Andrew is using 100 - $8'' \times 9''$ stones.

- a) Paul says his area is 1.5 times bigger. Is he correct?
- b) Why / Why Not?

Book - "If you could Hop like a Frog".

Consolidation Question

- a) Examine the following diagrams and represent the relationship between the side length and perimeter in two different ways.

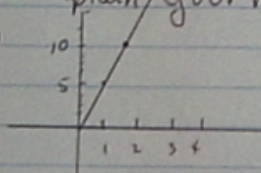


- b) Does the following diagram represent the same relationship? Explain how you know.

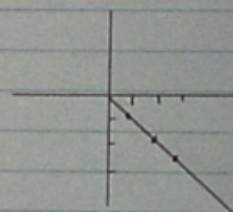


Are these relationships proportional? Why/why not?
Explain your reasoning.

a)



b)



- ☐ Open
- ☐ Other

Sample Consolidation Question(s)

- <Word your question>

- You are paid hourly wage. If you work 3 times the number of hours, does your pay triple? What kind of relationship is there b/w the number of hours worked and your pay.